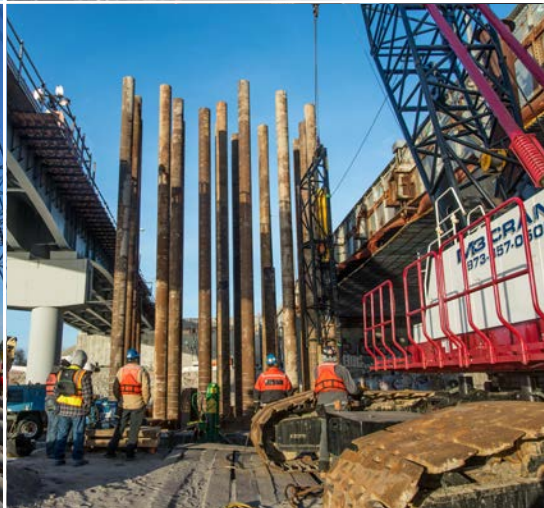
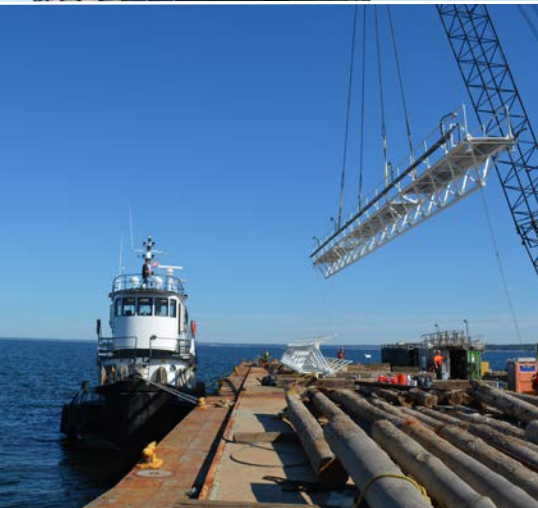


# JT Cleary

A TULLY GROUP COMPANY



THE LEADER IN MARINE CONSTRUCTION



For expertise in dredging and coastal installations, JT Cleary is the “go to” marine construction company for the Eastern seaboard.

## Competitive Strengths

### Organized to focus on coastal projects

Based in the New York Harbor, JT Cleary knows the challenges of marine environments. With a policy of hiring only the best in the industry, our projects are staffed by the most talented coastal and marine engineers and project managers, each with experience in major marine terminal installations, offshore platforms, dredging, and underwater deep foundations.

### One-stop shop makes all the difference

Our in-house capabilities across all marine construction disciplines make us faster, agile and more responsive. Our customer-centric approach results in a higher level of service and trust.

### Innovation builds a safer future

Generating ideas for improvement and cost savings without changing overall design creates value for our customers. Always seeking to utilize the latest technology, modern equipment and top talent provides us the edge in developing the best and safest construction methods.





### Service – every job is a partnership

Service is not about how you start; it’s all about how you finish. Meticulous advance planning is a given. Experienced professionals will eliminate basic errors from happening, but how we act when an unforeseen problem occurs differentiates us. That’s when deep knowledge and experience come into play.

### Health & Safety – an injury free workplace

The safety of employees and operations impacts every aspect of work. Hazard analysis and prevention, ongoing training, compliance and vigilance are key to maintaining the company’s outstanding safety record.

### JT Cleary corporate culture

-  Strives for an incident and injury free workplace
-  Empowers any team member to stop operations for safety reasons
-  Understands that safety affects everyone: Co-workers, families, clients, and industry
-  Believes that safety is not just about compliance, but also an attitude and way of life

## Marine Construction – the method matters

JT Cleary will always identify the optimal construction methodology for each project. Our expertise covers marine installations, such as

Bulkheads	Fender systems	Pile jackets
Cofferdams	Fixed aids to navigation	Pipelines
Dams	Offshore platforms	Revetments
Drilled piles & tiebacks	Piers & docks	Underpinning

## Dredging – the right tools for the job

The dredging division customizes its approach to the unique aspects of each operation, whether maintenance or environmental dredging, or deepening. JT Cleary continuously invests in a modern fleet and equipment to ensure the right tools for the job.

Maintenance	Clamshell bucket	Beach or offshore placement
Deepening	Environmental	Sediment dewatering
Debris removal	Upland placement	Sediment stabilization

## Deep Foundations – where strength meets perfection

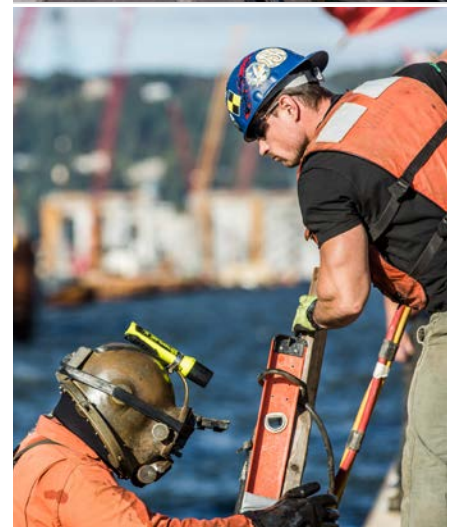
In a busy commercial harbor or marine environment, deep foundations are required for diverse structures, ranging from bridges spanning waterways, wharves, bulkheads and moorings for vessels and offloading of container ships. JT Cleary has extensive capability in cofferdam design and construction, concrete placement, driving steel sheet piles, and other components of these specialized installations.

Drilled shafts	Tie backs	Mini piles
Driven piles	Cofferdams	Secant piles

## Diving – safety is paramount

JT Cleary retains in-house dive teams with the most experienced commercial divers in the business. This ensures the highest safety standards, often around the most critical areas of a project, whether a bridge, bulkhead or offshore platform.

Underwater inspection	Offshore platform nodal repairs
Pile jacketing – epoxy and concrete	Intake structure maintenance
Pipeline installation and maintenance	Dam maintenance





Main Office: 2300 E. 69th Street, 2nd Floor, Brooklyn, NY 11234

Billing Address: 127-50 Northern Blvd, Flushing, NY 11368

Tel: 845-352-1099 / Fax: 845-352-1098

[info@jtcleary.com](mailto:info@jtcleary.com) / [www.jtcleary.com](http://www.jtcleary.com)