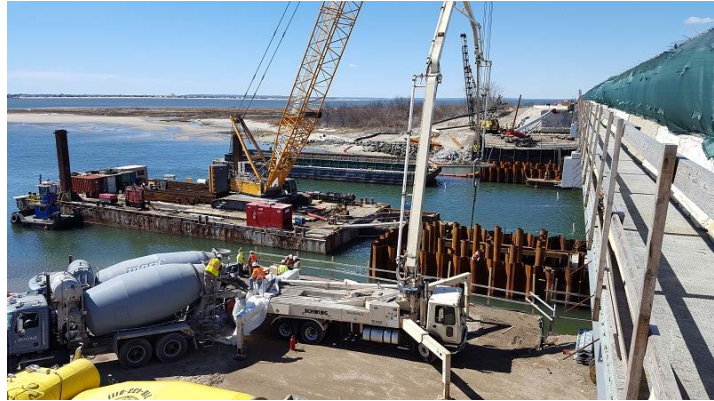


JT Cleary Completes Work on Bridge over Gerritsen Inlet, Brooklyn

For Immediate Release, July 30, 2018, Chestnut Ridge, NY: JT Cleary completed its work on the replacement of the Shore (Belt) Parkway Bridge over Gerritsen Inlet in Brooklyn, New York. JT Cleary's scope included installation of marine foundations for the new \$104 million bridge in three phases, including design and excavation of the cofferdams, supply and installation of concrete pilings, concrete sealing for the underwater structures, and installation of timber piles for fender and dolphin systems.



About JT Cleary

JT Cleary is a leader in marine construction, delivering innovation with the highest standards of quality and safety. Capabilities include a variety of marine structures, dredging, diving, and deep foundations. Based in the greater New York City area since 1995, the company performs work along the eastern seaboard and gulf coast with its state-of-the-art fleet and the top talent in the marine construction sector.

www.jtcleary.com

For more information, contact:

Carol Shobrook, President, Sales & Marketing

JT Cleary, Inc.

100 Red Schoolhouse Rd, Ste A-12

Chestnut Ridge, NY 10977

Tel. 845-352-1099 ext. 115

c.shobrook@jtcleary.com